

# RAYSAN

Flexible Barrier  
POLYGUARD  
PuffyGuard

THINK  
FLEX-  
IBLE

## 1R BARRIER

WITH ITS EASY-TO-ASSEMBLE STRUCTURE, IT IS IDEAL FOR VEHICLE COLLISIONS NEAR THE GROUND IN INDOOR AND OUTDOOR ENVIRONMENTS WITH TRANSPORT AND LOADING VEHICLE TRAFFIC. IT PROTECTS INVESTMENTS SUCH AS STRUCTURES, GOODS, MACHINERY IN AREAS CLOSE TO THE GROUND FROM WEAR AND TEAR CAUSED BY CONTINUOUS IMPACTS. THEY ARE ALSO USED TO DELIMIT, DIVIDE AND ORGANIZE DESIRED AREAS.





EXPERIENCE **UNPARALLELED STRENGTH** WITH OUR ADVANCED POLYMER, CRAFTED FROM A **PREMIUM BLEND** OF SOPHISTICATED POLYOLEFINS AND RUBBER ADDITIVES. THIS **EXCLUSIVE** COMPOSITION DELIVERS UNMATCHED DURABILITY AND **FLEXIBILITY**. OUR CUTTING-EDGE ENGINEERING PROCESS REORIENTS THE **MOLECULAR STRUCTURE** DURING MANUFACTURING, ENDOWING THE BARRIER WITH A UNIQUE **BUILT-IN MEMORY**. THIS INNOVATIVE FEATURE ENSURES THAT THE BARRIER **RECOVERS COMPLETELY** AFTER IMPACTS, MAINTAINING PEAK PERFORMANCE AND **RELIABILITY**.

## STRONG AND LIGHTWEIGHT

Thanks to its unique chemical formula, our barrier surpasses steel barriers in both strength and weight. It is significantly lighter while maintaining its exceptional durability.

## MODULAR

Thanks to its modular design, our barrier effortlessly adapts to the changing needs of your facility. This flexible solution is extremely easy to install, assemble, disassemble, relocate and organize.

## NO CORROSION

Unlike steel barriers, our barriers are made of durable polymer materials, making them unaffected by environmental elements such as sunlight and rainwater.

## NO PAINT AND MAINTENANCE NEEDED

Unlike Raysan's steel barriers that require regular painting and maintenance, our self-colored structure eliminates the need for these processes. Even if the barrier is scratched due to an impact, its surface retains its original color without any change.

## ULTRAVIOLET RESISTANT

Our barriers are designed with exceptional resistance to UV radiation. Their chemical structure remains intact even after prolonged outdoor use, ensuring long-term durability.

## ANTIBACTERIAL

Our barriers have an exceptional chemical formula that prevents them from having any chemical reaction with the substances they come into contact with.





ALPHA	Post Dimension [D1]	Post Height [H]	Rail Dimension [D2]	Rail Length Range [L1]	Barrier Length MAX [L2]	Impact Zone [Z]
	Ø250 mm	470 mm	Ø200 mm	500 mm – 3000 mm	3250 mm	200 mm



DELTA	Post Dimension [D1]	Post Height [H]	Rail Dimension [D2]	Rail Length Range [L1]	Barrier Length MAX [L2]	Impact Zone [Z]
	Ø200 mm	430 mm	Ø160 mm	400 mm – 2700 mm	2900 mm	160 mm

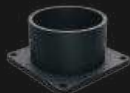
ZETA	Post Dimension [D1]	Post Height [H]	Rail Dimension [D2]	Rail Length Range [L1]	Barrier Length MAX [L2]	Impact Zone [Z]
	Ø160 mm	400 mm	Ø125 mm	320 mm – 2350 mm	2510 mm	125 mm



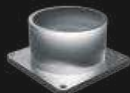
TECHNICAL DRAWING



FIXING REQUIREMENTS



ELECTROSTATIC PAINT



STAINLESS STEEL

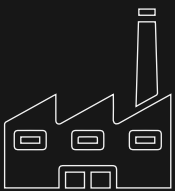


GALVANIZE

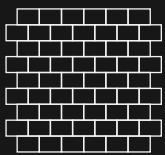


Concrete Quality	Minimum C25/30
Concrete Floor Plate Thickness [mm]	Minimum 150 mm
Water and Humidity	<b>Steel</b> [standart] : Suitable for dry indoor use only. <b>Galvanize</b> : Can be used in most outdoor environments. <b>Stainless Steel</b> : Ideal for outdoor use or environments with frequent exposure to water and humidity.

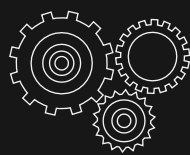
SUITABLE APPLICATION



BUILDING AND EQUIPMENT SAFEGUARDS



CORRIDOR AND WALL DEFENSES



MACHINERY PROTECTION SOLUTIONS

IMPACT ENERGY DETAILS

90° IMPACT

ALPHA	14,600 JOULE
DELTA	9,800 JOULE
ZETA	5,800 JOULE



STANDART COLORS

RAL 1018 PANTONE 123C

RAL 9005 PANTONE B6C

\*Please note that the RAL and PANTONE colours listed are the closest match to standard RAYSAN colours, but may not be exact matches of the actual product colour and should be used for guidance only.

SUITABLE FOR



- \*90° Impact on Mid Rail of Maximum Post Centres
- \*Results are Reflecting instantaneous Impact Values
- \*Does not Provide Resistance to Sharp Impacts



## FOLLOW US



**DISCOVER MORE**  
about our innovative products,  
exceptional services &  
global network of dealers.

TÜVNORD

TÜV NORD CERT GmbH

ISO 9001

tuev-nord.de

# RAYSAN

AS RAYSAN, WE ARE PROUD TO PIONEER THE FUTURE OF INDUSTRIAL SAFETY. WITH OUR STATE-OF-THE-ART FLEXIBLE PROTECTIVE BARRIERS AND SOLUTIONS, WE ARE AT THE FOREFRONT OF INNOVATION, PROTECTING WORKPLACES AROUND THE WORLD. OUR COMMITMENT TO EXCELLENCE AND UNWAVERING DEDICATION TO ADVANCING SAFETY STANDARDS HAS PROPELLED US TO THE TOP OF THE INDUSTRY.

# YOUR TRUSTED PARTNER