

RAYSAN

Flexible Barrier
POLYGUARD
PuffyGuard

THINK
FLEX-
IBLE

2R BARRIER

OUR 2R FLEXIBLE BARRIERS, WITH THEIR MEDIUM HEIGHT AND EASY-TO-ASSEMBLE DESIGN, ARE PERFECT FOR PROTECTING STRUCTURES, GOODS, AND MACHINERY FROM MEDIUM-LEVEL VEHICLE IMPACTS IN BUSY INDOOR AND OUTDOOR ENVIRONMENTS. IDEAL FOR PARKS, RAMPS, AND OPEN EDGES, THEY ALSO HELP ORGANIZE AND DEFINE SPACES WHILE PROVIDING RELIABLE PROTECTION AGAINST CONSTANT WEAR AND TEAR.



STRONG AND LIGHTWEIGHT

Thanks to its unique chemical formula, our barrier surpasses steel barriers in both strength and weight. It is significantly lighter while maintaining its exceptional durability.

MODULAR

Thanks to its modular design, our barrier effortlessly adapts to the changing needs of your facility. This flexible solution is extremely easy to install, assemble, disassemble, relocate and organize.

NO CORROSION

Unlike steel barriers, our barriers are made of durable polymer materials, making them unaffected by environmental elements such as sunlight and rainwater.

NO PAINT AND MAINTENANCE NEEDED

Unlike Raysan's steel barriers that require regular painting and maintenance, our self-colored structure eliminates the need for these processes. Even if the barrier is scratched due to an impact, its surface retains its original color without any change.

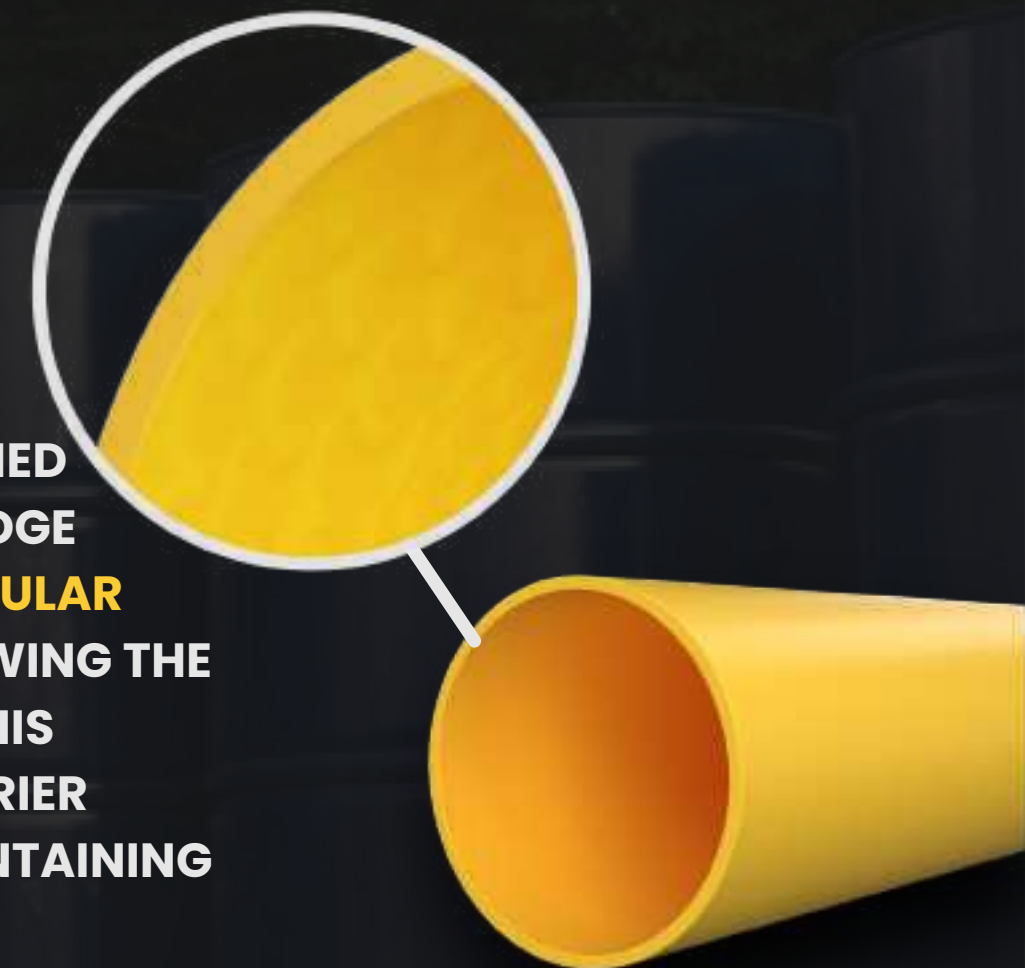
ULTRAVIOLET RESISTANT

Our barriers are designed with exceptional resistance to UV radiation. Their chemical structure remains intact even after prolonged outdoor use, ensuring long-term durability.

ANTIBACTERIAL

Our barriers have an exceptional chemical formula that prevents them from having any chemical reaction with the substances they come into contact with.

EXPERIENCE **UNPARALLELED STRENGTH** WITH OUR **ADVANCED POLYMER**, CRAFTED FROM A **PREMIUM BLEND** OF SOPHISTICATED **POLYOLEFINS** AND **RUBBER ADDITIVES**. THIS **EXCLUSIVE COMPOSITION** DELIVERS **UNMATCHED DURABILITY** AND **FLEXIBILITY**. OUR **CUTTING-EDGE ENGINEERING PROCESS** REORIENTS THE **MOLECULAR STRUCTURE** DURING MANUFACTURING, ENDOWING THE BARRIER WITH A UNIQUE **BUILT-IN MEMORY**. THIS INNOVATIVE FEATURE ENSURES THAT THE BARRIER **RECOVERS COMPLETELY** AFTER IMPACTS, MAINTAINING **PEAK PERFORMANCE** AND **RELIABILITY**.



ALPHA	Post Dimension [D1]	Post Height [H]	Rail Dimension [D2]	Rail Length Range [L1]	Barrier Length MAX [L2]	Impact Zone [Z]
	Ø250 mm	820 mm	Ø200 mm	500 mm – 3000 mm	3250 mm	550 mm



DELTA	Post Dimension [D1]	Post Height [H]	Rail Dimension [D2]	Rail Length Range [L1]	Barrier Length MAX [L2]	Impact Zone [Z]
	Ø200 mm	740 mm	Ø160 mm	400 mm – 2700 mm	2900 mm	470 mm

ZETA	Post Dimension [D1]	Post Height [H]	Rail Dimension [D2]	Rail Length Range [L1]	Barrier Length MAX [L2]	Impact Zone [Z]
	Ø160 mm	670 mm	Ø125 mm	320 mm – 2350 mm	2510 mm	400 mm



IMPACT ENERGY DETAILS

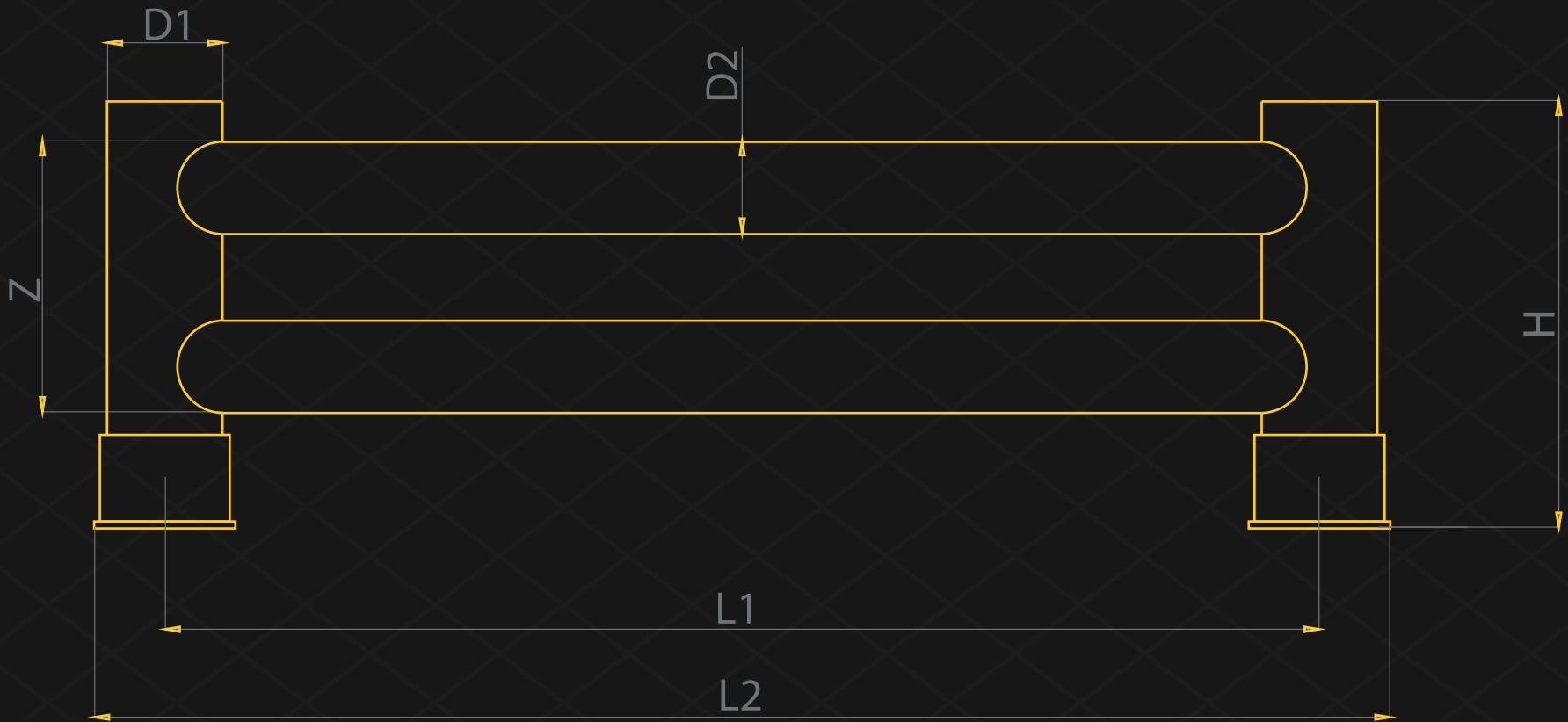


90° IMPACT

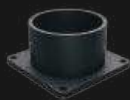
ALPHA	19,300 JOULE
DELTA	13,600 JOULE
ZETA	8,900 JOULE



TECHNICAL DRAWING



BASE PLATES



ELECTROSTATIC PAINT



STAINLESS STEEL

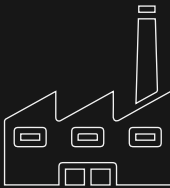


GALVANIZE

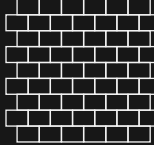


Concrete Quality	Minimum C25/30
Concrete Floor Plate Thickness [mm]	Minimum 150 mm
Water and Humidity	Steel [standart] : Suitable for dry indoor use only. Galvanize : Can be used in most outdoor environments. Stainless Steel : Ideal for outdoor use or environments with frequent exposure to water and humidity.

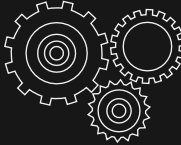
SUITABLE APPLICATION



BUILDING AND EQUIPMENT SAFEGUARDS



CORRIDOR AND WALL DEFENSES



MACHINERY PROTECTION SOLUTIONS

SUITABLE FOR



- *90° Impact on Mid Rail of Maximum Post Centres
- *Results are Reflecting instantaneous Impact Values
- *Does not Provide Resistance to Sharp Impacts

STANDART COLORS

RAL 1018 PANTONE 123C

RAL 9005 PANTONE B6C

*Please note that the RAL and PANTONE colours listed are the closest match to standard RAYSAN colours, but may not be exact matches of the actual product colour and should be used for guidance only.

FOLLOW US



DISCOVER MORE
about our innovative products,
exceptional services &
global network of dealers.

TÜVNORD

TÜV NORD CERT GmbH

ISO 9001

tuev-nord.de

RAYSAN

AS RAYSAN, WE ARE PROUD TO PIONEER THE FUTURE OF INDUSTRIAL SAFETY. WITH OUR STATE-OF-THE-ART FLEXIBLE PROTECTIVE BARRIERS AND SOLUTIONS, WE ARE AT THE FOREFRONT OF INNOVATION, PROTECTING WORKPLACES AROUND THE WORLD. OUR COMMITMENT TO EXCELLENCE AND UNWAVERING DEDICATION TO ADVANCING SAFETY STANDARDS HAS PROPELLED US TO THE TOP OF THE INDUSTRY.

YOUR TRUSTED PARTNER