

RAYSAN

Flexible Barrier
POLYGUARD
PuffyGuard

THINK
FLEX-
IBLE

2R BARRIER XL

DESIGNED FOR QUICK ASSEMBLY, THIS BARRIER IS PERFECT FOR PROTECTING AGAINST MEDIUM-HEIGHT VEHICLE IMPACTS IN INDOOR AND OUTDOOR SPACES WITH TRANSPORT AND LOADING TRAFFIC. IDEAL FOR SAFEGUARDING STRUCTURES, GOODS, AND MACHINERY IN HIGH-IMPACT AREAS, IT ALSO HELPS DEFINE AND ORGANIZE SPACES WHILE ENSURING LASTING DURABILITY. BUILT FOR DEMANDING ENVIRONMENTS, IT OFFERS RELIABLE PERFORMANCE AGAINST CONTINUOUS IMPACTS.



STRONG AND LIGHTWEIGHT

Thanks to its unique chemical formula, our barrier surpasses steel barriers in both strength and weight. It is significantly lighter while maintaining its exceptional durability.

MODULAR

Thanks to its modular design, our barrier effortlessly adapts to the changing needs of your facility. This flexible solution is extremely easy to install, assemble, disassemble, relocate and organize.

NO CORROSION

Unlike steel barriers, our barriers are made of durable polymer materials, making them unaffected by environmental elements such as sunlight and rainwater.

NO PAINT AND MAINTENANCE NEEDED

Unlike Raysan's steel barriers that require regular painting and maintenance, our self-colored structure eliminates the need for these processes. Even if the barrier is scratched due to an impact, its surface retains its original color without any change.

ULTRAVIOLET RESISTANT

Our barriers are designed with exceptional resistance to UV radiation. Their chemical structure remains intact even after prolonged outdoor use, ensuring long-term durability.

ANTIBACTERIAL

Our barriers have an exceptional chemical formula that prevents them from having any chemical reaction with the substances they come into contact with.

EXPERIENCE UNPARALLELED STRENGTH WITH OUR ADVANCED POLYMER, CRAFTED FROM A PREMIUM BLEND OF SOPHISTICATED POLYOLEFINS AND RUBBER ADDITIVES. THIS EXCLUSIVE COMPOSITION DELIVERS UNMATCHED DURABILITY AND FLEXIBILITY. OUR CUTTING-EDGE ENGINEERING PROCESS REORIENTS THE MOLECULAR STRUCTURE DURING MANUFACTURING, ENDOWING THE BARRIER WITH A UNIQUE BUILT-IN MEMORY. THIS INNOVATIVE FEATURE ENSURES THAT THE BARRIER RECOVERS COMPLETELY AFTER IMPACTS, MAINTAINING PEAK PERFORMANCE AND RELIABILITY.



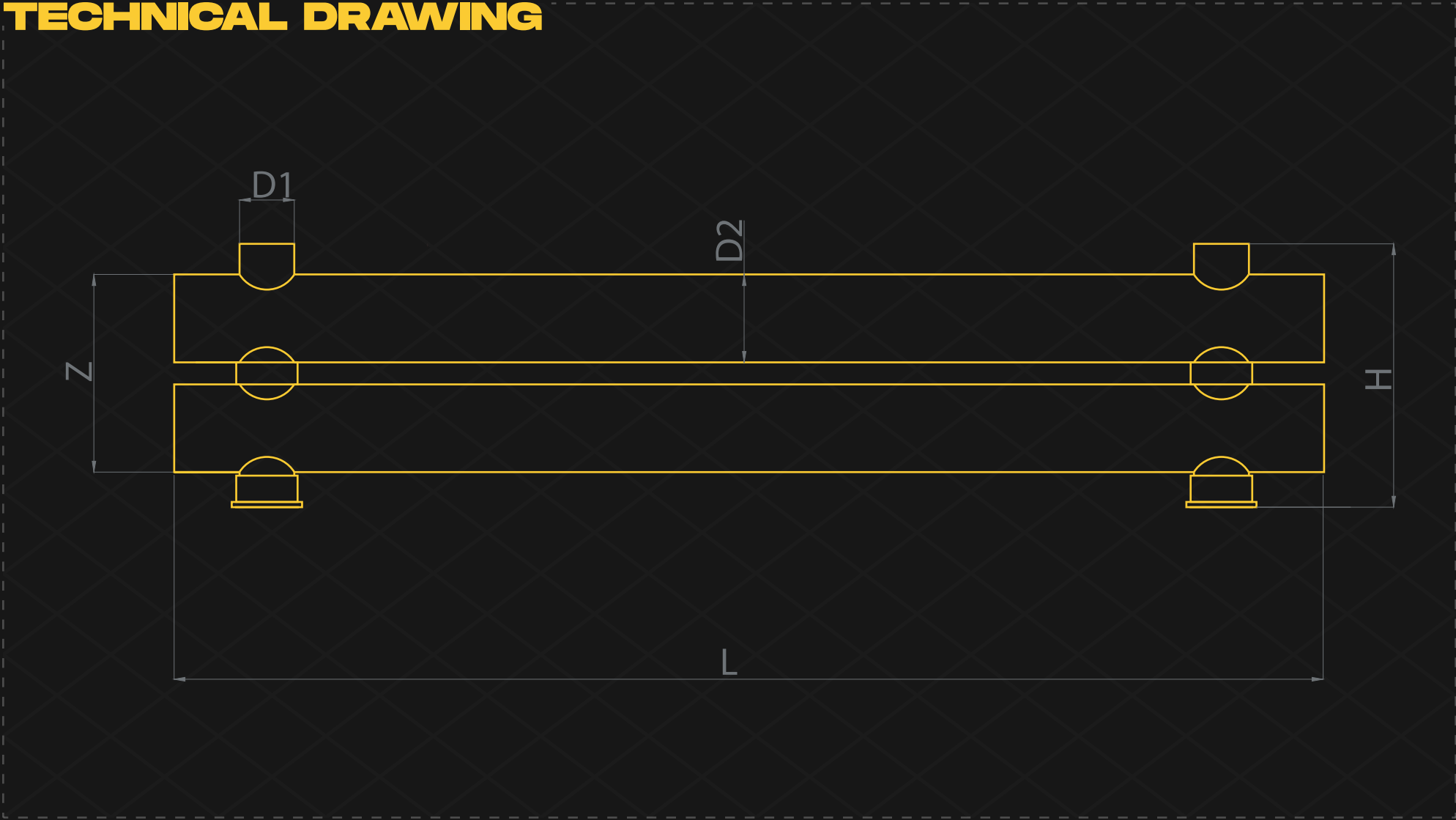
ZETA	Post Dimension [D1]	Post Height [H]	Rail Dimension [D2]	Rail Length Range [L1]	Barrier Length MAX [L2]	Impact Zone [Z]
	Ø160 mm	720 mm	Ø250 mm	700 mm - 3620 mm	3620 mm	570 mm



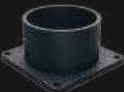
TETA	Post Dimension [D1]	Post Height [H]	Rail Dimension [D2]	Rail Length Range [L1]	Barrier Length MAX [L2]	Impact Zone [Z]
	Ø125 mm	540 mm	Ø160 mm	700 mm - 3250 mm	3250 mm	390 mm



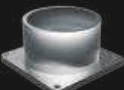
TECHNICAL DRAWING



FIXING REQUIREMENTS



ELECTROSTATIC PAINT



STAINLESS STEEL

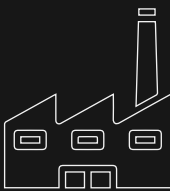


GALVANIZE

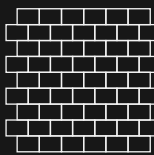


Concrete Quality	Minimum C25/30
Concrete Floor Plate Thickness [mm]	Minimum 150 mm
Water and Humidity	Steel [standart] : Suitable for dry indoor use only. Galvanize : Can be used in most outdoor environments. Stainless Steel : Ideal for outdoor use or environments with frequent exposure to water and humidity.

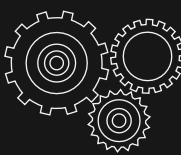
SUITABLE APPLICATION



BUILDING AND EQUIPMENT SAFEGUARDS



CORRIDOR AND WALL DEFENSES



MACHINERY PROTECTION SOLUTIONS



IMPACT ENERGY DETAILS

90° IMPACT

ZETA 23,100 JOULE

TETA 14,800 JOULE



SUITABLE FOR



- *90° Impact on Mid Rail of Maximum Post Centres
- *Results are Reflecting instantaneous Impact Values
- *Does not Provide Resistance to Sharp Impacts

STANDART COLORS

RAL 1018 PANTONE 123C

RAL 9005 PANTONE B6C

*Please note that the RAL and PANTONE colours listed are the closest match to standard RAYSAN colours, but may not be exact matches of the actual product colour and should be used for guidance only.

Value Nature and People

FOLLOW US



DISCOVER MORE
about our innovative products,
exceptional services &
global network of dealers.

TÜVNORD

TÜV NORD CERT GmbH

ISO 9001

tuev-nord.de

RAYSAN

AS RAYSAN, WE ARE PROUD TO PIONEER THE FUTURE OF INDUSTRIAL SAFETY. WITH OUR STATE-OF-THE-ART FLEXIBLE PROTECTIVE BARRIERS AND SOLUTIONS, WE ARE AT THE FOREFRONT OF INNOVATION, PROTECTING WORKPLACES AROUND THE WORLD. OUR COMMITMENT TO EXCELLENCE AND UNWAVERING DEDICATION TO ADVANCING SAFETY STANDARDS HAS PROPELLED US TO THE TOP OF THE INDUSTRY.

YOUR TRUSTED PARTNER