

# RAYSAN

Flexible Barrier  
POLYGUARD  
PuffyGuard

THINK  
FLEX-  
IBLE

## SUPREME TOPPLE BARRIER

DESIGNED FOR EASY ASSEMBLY, THIS BARRIER IS IDEAL FOR PREVENTING STACKED GOODS FROM TOPPLING OVER IN STORAGE AREAS WITH TRANSPORT AND LOADING TRAFFIC. SPECIFICALLY CRAFTED TO SECURE STORED MATERIALS, IT REDUCES THE RISK OF ACCIDENTAL FALLS CAUSED BY MOVEMENT AND IMPACT. REINFORCED FOR MAXIMUM STABILITY, IT ENSURES DURABLE PROTECTION, ENHANCING SAFETY FOR BOTH GOODS AND WORKERS IN INDUSTRIAL ENVIRONMENTS.





EXPERIENCE **UNPARALLELED STRENGTH** WITH OUR ADVANCED POLYMER, CRAFTED FROM A **PREMIUM BLEND** OF SOPHISTICATED POLYOLEFINS AND RUBBER ADDITIVES. THIS **EXCLUSIVE** COMPOSITION DELIVERS UNMATCHED DURABILITY AND **FLEXIBILITY**. OUR CUTTING-EDGE ENGINEERING PROCESS REORIENTS THE **MOLECULAR STRUCTURE** DURING MANUFACTURING, ENDOWING THE BARRIER WITH A UNIQUE **BUILT-IN MEMORY**. THIS INNOVATIVE FEATURE ENSURES THAT THE BARRIER **RECOVERS COMPLETELY** AFTER IMPACTS, MAINTAINING PEAK PERFORMANCE AND **RELIABILITY**.

## STRONG AND LIGHTWEIGHT

Thanks to its unique chemical formula, our barrier surpasses steel barriers in both strength and weight. It is significantly lighter while maintaining its exceptional durability.

## MODULAR

Thanks to its modular design, our barrier effortlessly adapts to the changing needs of your facility. This flexible solution is extremely easy to install, assemble, disassemble, relocate and organize.

## CORROSION-FREE

Unlike steel barriers, our barriers are made of durable polymer materials, making them unaffected by environmental elements such as sunlight and rainwater.

## NO PAINTING OR MAINTENANCE REQUIRED

Unlike Raysan's steel barriers that require regular painting and maintenance, our self-colored structure eliminates the need for these processes. Even if the barrier is scratched due to an impact, its surface retains its original color without any change.

## UV-RESISTANT

Our barriers are designed with exceptional resistance to UV radiation. Their chemical structure remains intact even after prolonged outdoor use, ensuring long-term durability.

## ANTIMICROBIAL

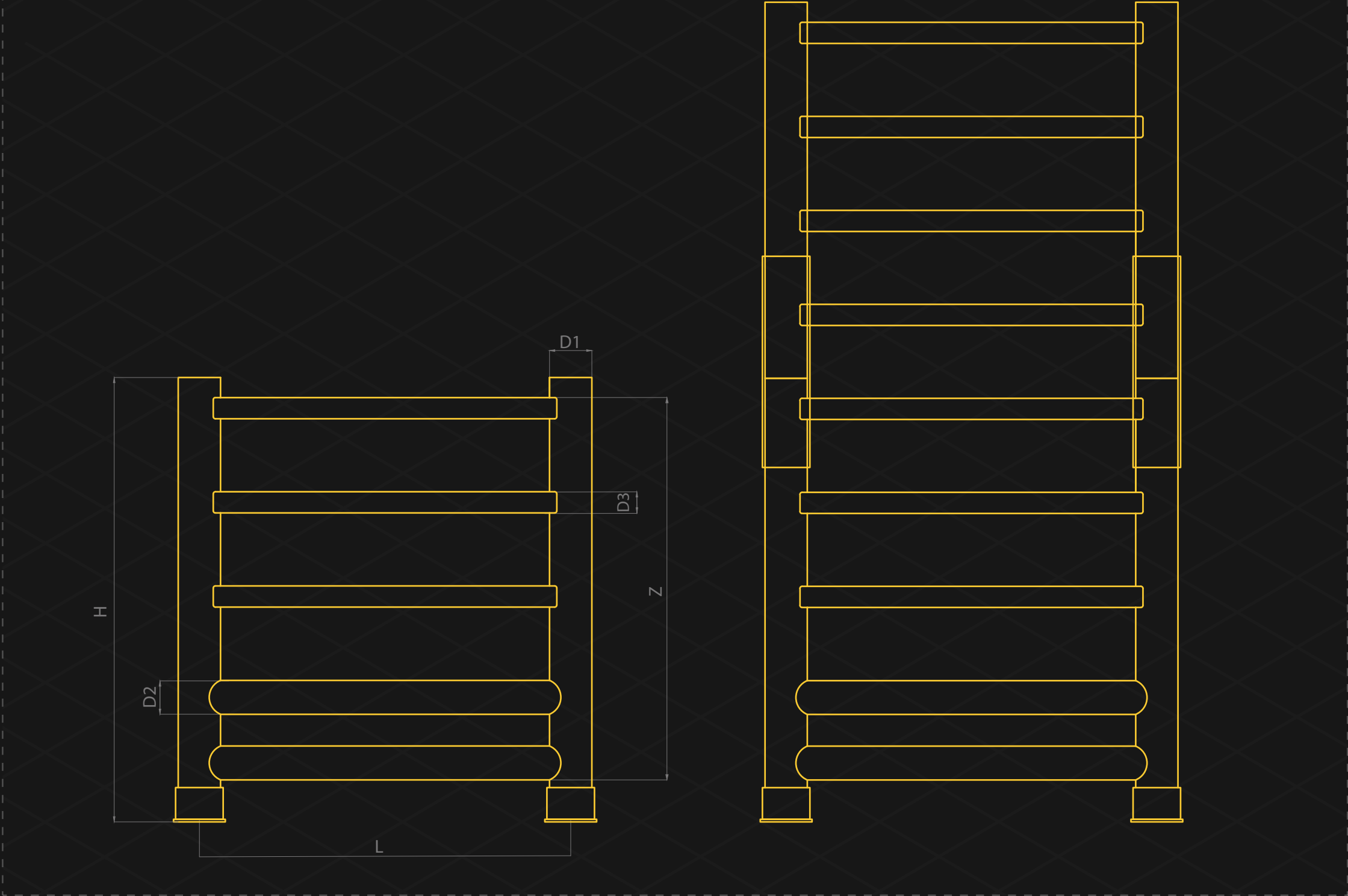
Our barriers have an exceptional chemical formula that prevents them from having any chemical reaction with the substances they come into contact with.



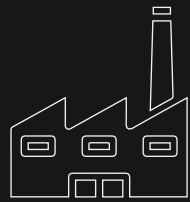


<b>DELTA</b>	Post Dimension <b>[D1]</b>	Post Height <b>[H]</b>	Rail Dimension <b>[D2]</b>	Rail Dimension <b>[D3]</b>	Rail Length Range <b>[L2]</b>	Impact Zone <b>[Z]</b>
	Ø7 7⁄8"	82 2⁄3"	Ø6 1⁄3"	2" x 4"	19 2⁄3" - 59"	78"

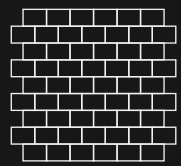
TECHNICAL DRAWING



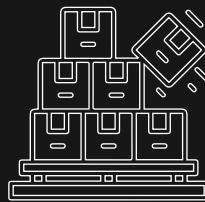
SUITABLE APPLICATION



BUILDING AND  
EQUIPMENT  
SAFEGUARDS



CORRIDOR  
AND WALL  
DEFENSES



PROTECT  
STACKED  
LOADS

SUITABLE FOR



LIGHTWEIGHT  
FORKLIFT

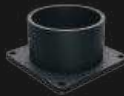


ELECTRIC  
STACKER

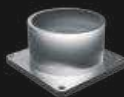


MANUAL  
PALLET

FIXING REQUIREMENTS



ELECTROSTATIC PAINT



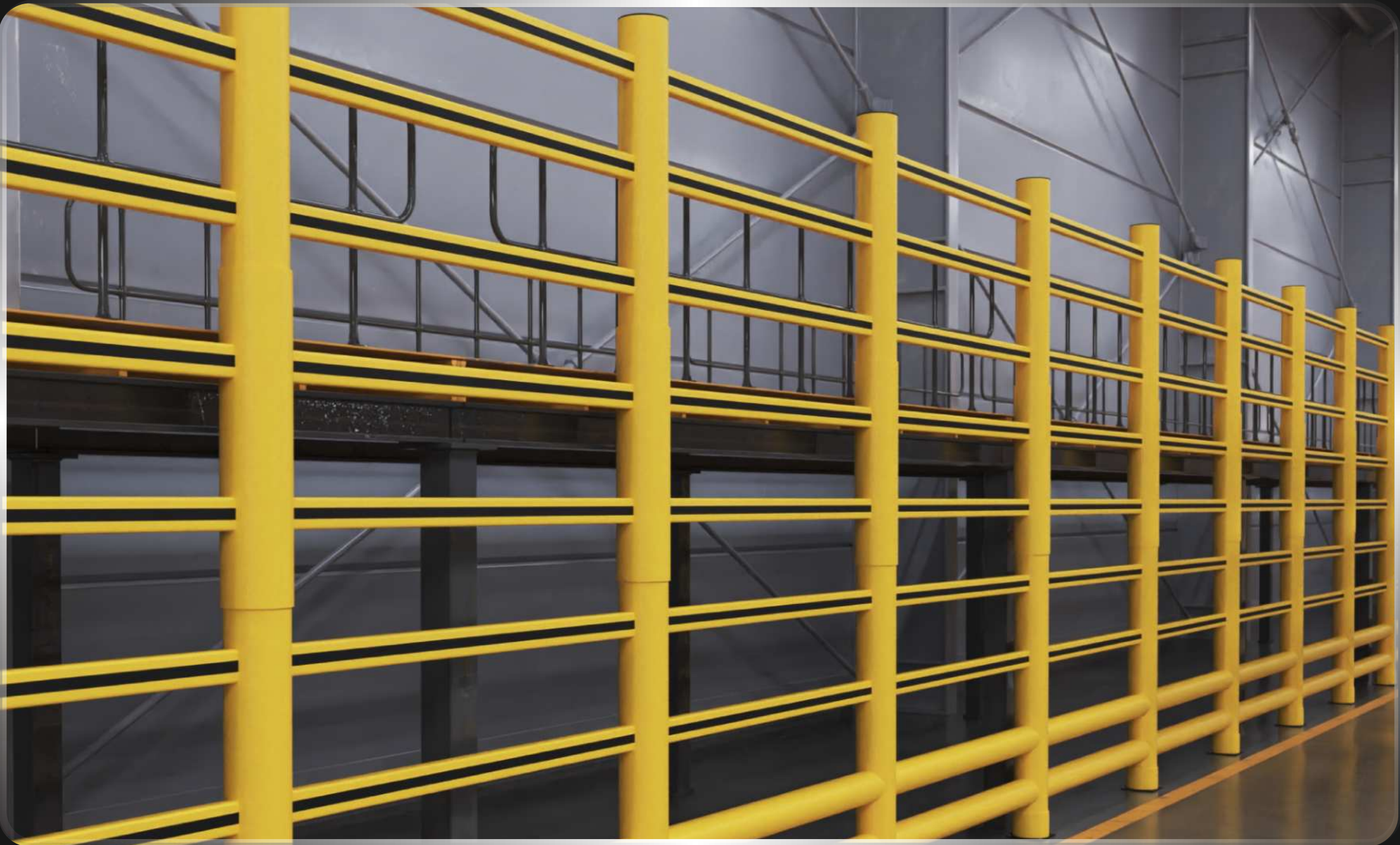
STAINLESS STEEL



GALVANIZED



Concrete Quality	Minimum C25/30
Concrete Floor Plate Thickness [mm]	Minimum 6"
Water and Humidity	<b>Steel</b> [standart] : Suitable for dry indoor use only. <b>Galvanize</b> : Can be used in most outdoor environments. <b>Stainless Steel</b> : Ideal for outdoor use or environments with frequent exposure to water and humidity.



STANDART COLORS

RAL 1018 PANTONE 123C

RAL 9005 PANTONE B6C

\*Please note that the RAL and PANTONE colours listed are the closest match to standard RAYSAN colours, but may not be exact matches of the actual product colour and should be used for guidance only.



## FOLLOW US



**DISCOVER MORE**  
about our innovative products,  
exceptional services &  
global network of dealers.

TÜVNORD

TÜV NORD CERT GmbH

ISO 9001

tuev-nord.de

# RAYSAN

AS RAYSAN, WE ARE PROUD TO PIONEER THE FUTURE OF INDUSTRIAL SAFETY. WITH OUR STATE-OF-THE-ART FLEXIBLE PROTECTIVE BARRIERS AND SOLUTIONS, WE ARE AT THE FOREFRONT OF INNOVATION, PROTECTING WORKPLACES AROUND THE WORLD. OUR COMMITMENT TO EXCELLENCE AND UNWAVERING DEDICATION TO ADVANCING SAFETY STANDARDS HAS PROPELLED US TO THE TOP OF THE INDUSTRY.

# YOUR TRUSTED PARTNER